

Operator: Validation Manager
Process: Validation
Session Start: 22-11-2013 09:22:12
Session Stop: 22-11-2013 09:22:23
Session Name: EtO Validation
Session Text:

Vessel: EtO sterilizer
Product: Pharma Medical
Time Zone: UTC offset 01:00:00



Validation of EtO Sterilizer

Validation of EthyleneOxide Sterilization process using multiple TrackSense wireless loggers.

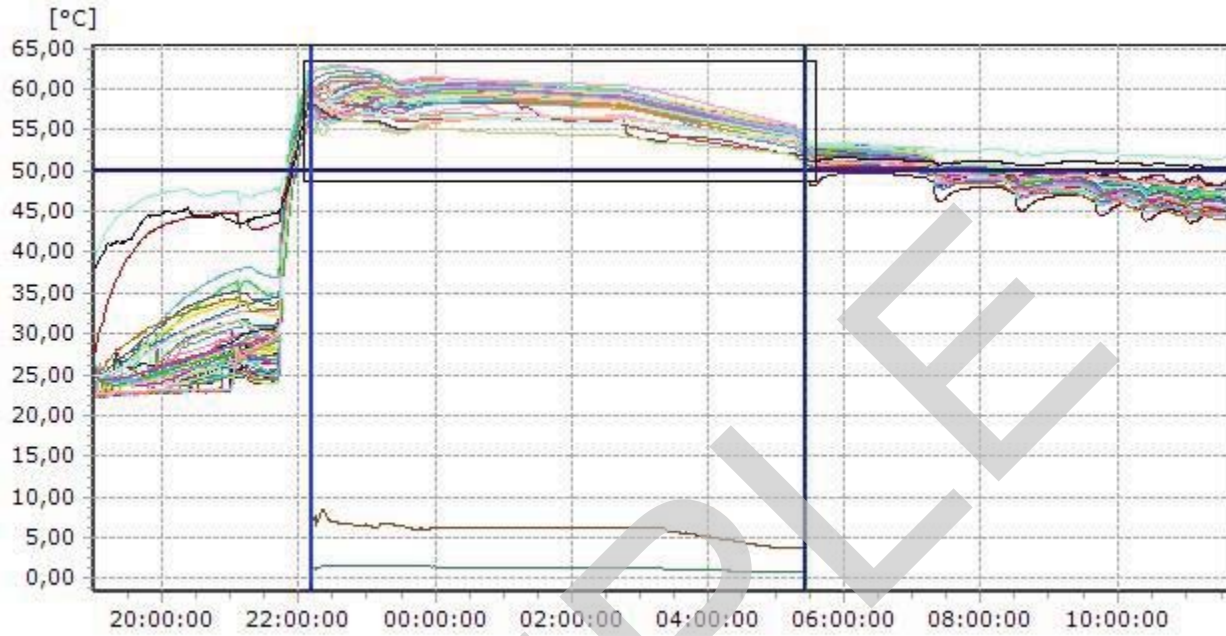


Operator: Validation Manager
Process: Validation
Session Start: 22-11-2013 09:22:12
Session Stop: 22-11-2013 09:22:23
Session Name: EtO Validation
Session Text:

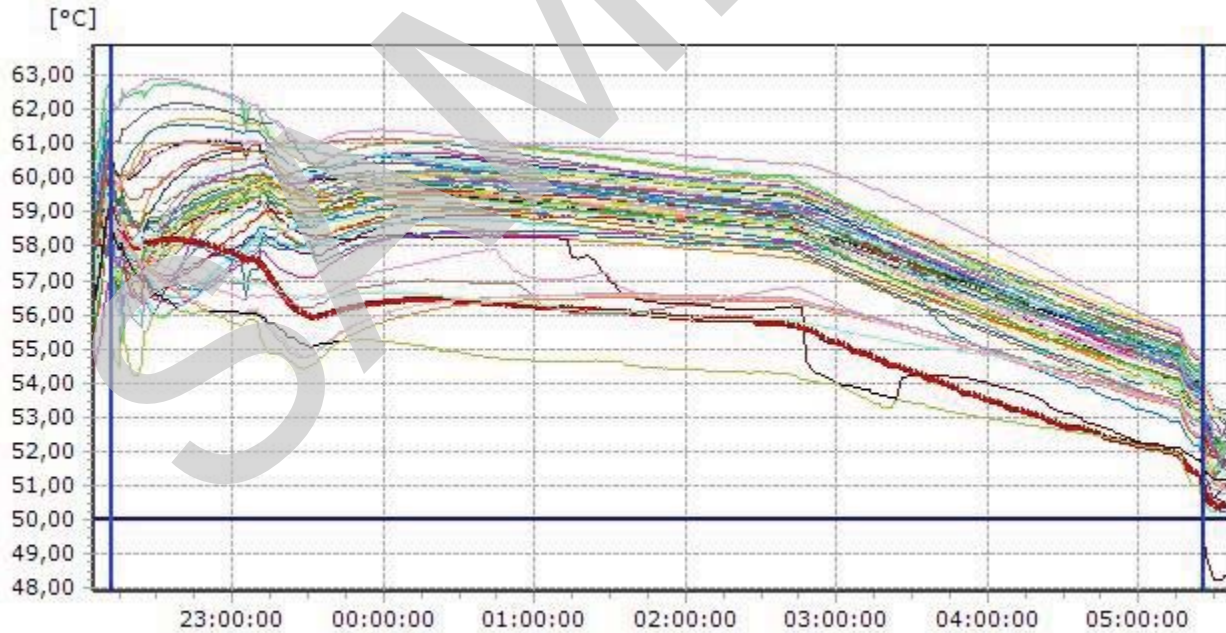
Vessel: EtO sterilizer
Product: Pharma Medical
Time Zone: UTC offset 01:00:00



Graph



Graph Zoom



Operator: Validation Manager Vessel: EtO sterilizer
Process: Validation Product: Pharma Medical
Session Start: 22-11-2013 09:22:12 Time Zone: UTC offset 01:00:00
Session Stop: 22-11-2013 09:22:23
Session Name: EtO Validation
Session Text:



Time Marker Report

Name	Time Stamp	Description
Process start	12-03-1997 22:12:00	Tool 4
Process stop	13-03-1997 05:26:00	Tool 5

SAMPLE

Operator: Validation Manager
 Process: Validation
 Session Start: 22-11-2013 09:22:12
 Session Stop: 22-11-2013 09:22:23
 Session Name: EtO Validation
 Session Text:

Vessel: EtO sterilizer
 Product: Pharma Medical
 Time Zone: UTC offset 01:00:00



Channel Overview

Sensor ID	Logger ID	Name	E-Val Flex S/N	Description	Sample Rate 1 (hh:mm:ss)	Sample Rate 2 (hh:mm:ss)
2238	2777	LC 1	N/A		00:01:00	N/A
2100	2182	LC 2	N/A		00:01:00	N/A
2122	2756	LC 3	N/A		00:01:00	N/A
2177	2219	LC 4	N/A		00:01:00	N/A
1920	2128	LC 5	N/A		00:01:00	N/A
2464	2752	LC 6	N/A		00:01:00	N/A
2764	2116	LC 7	N/A		00:01:00	N/A
2136	2181	LC 8	N/A		00:01:00	N/A
2051	2776	LC 9	N/A		00:01:00	N/A
2511	2749	LC10	N/A		00:01:00	N/A
2060	2281	LC11	N/A		00:01:00	N/A
2120	2861	LC12	N/A		00:01:00	N/A
2180	2631	LC13	N/A		00:01:00	N/A
2111	2598	LC14	N/A		00:01:00	N/A
2061	2491	LC15	N/A		00:01:00	N/A
2024	2576	LC16	N/A		00:01:00	N/A
2755	2498	LC17	N/A		00:01:00	N/A
2132	2441	LC18	N/A		00:01:00	N/A
2119	2867	LC19	N/A		00:01:00	N/A
2241	2321	LC20	N/A		00:01:00	N/A
2299	2331	LC21	N/A		00:01:00	N/A
2088	2731	LC22	N/A		00:01:00	N/A
1974	2654	LC23	N/A		00:01:00	N/A
2239	2448	LC24	N/A		00:01:00	N/A
2219	2859	LC25	N/A		00:01:00	N/A
2035	2431	LC26	N/A		00:01:00	N/A
2084	2360	LC27	N/A		00:01:00	N/A
2403	2467	LC28	N/A		00:01:00	N/A
2149	2865	LC29	N/A		00:01:00	N/A
2432	2410	LC30	N/A		00:01:00	N/A
2807	2322	LC31	N/A		00:01:00	N/A
2557	2522	LC32	N/A		00:01:00	N/A
2535	2619	LC33	N/A		00:01:00	N/A
1957	2341	LC34	N/A		00:01:00	N/A
1980	2490	LC35	N/A		00:01:00	N/A
2493	2669	LC36	N/A		00:01:00	N/A
2466	2452	LC37	N/A		00:01:00	N/A
2534	2675	LC38	N/A		00:01:00	N/A
2440	2724	LC39	N/A		00:01:00	N/A
2391	2648	LC40	N/A		00:01:00	N/A
2393	2847	LC41	N/A		00:01:00	N/A
2364	2320	LC42	N/A		00:01:00	N/A
2475	2312	LC43	N/A		00:01:00	N/A
2616	2850	LC44	N/A		00:01:00	N/A
2489	2411	LC45	N/A		00:01:00	N/A
2427	2302	LC46	N/A		00:01:00	N/A
2052	2456	LC47	N/A		00:01:00	N/A
2392	2329	LC48	N/A		00:01:00	N/A
2424	2759	LC49	N/A		00:01:00	N/A
2414	2833	LC50	N/A		00:01:00	N/A
2508	2721	LC51	N/A		00:01:00	N/A

Operator: Validation Manager
Process: Validation
Session Start: 22-11-2013 09:22:12
Session Stop: 22-11-2013 09:22:23
Session Name: EtO Validation
Session Text:

Vessel: EtO sterilizer
Product: Pharma Medical
Time Zone: UTC offset 01:00:00



Sensor ID	Logger ID	Name	E-Val Flex S/N	Description	Sample Rate 1 (hh:mm:ss)	Sample Rate 2 (hh:mm:ss)
2633	2326	LC52	N/A		00:01:00	N/A
2478	2350	LC53	N/A		00:01:00	N/A
2830	2557	LC54	N/A		00:01:00	N/A
2099	2353	LC55	N/A		00:01:00	N/A

SAMPLE

Operator: Validation Manager
 Process: Validation
 Session Start: 22-11-2013 09:22:12
 Session Stop: 22-11-2013 09:22:23
 Session Name: EtO Validation
 Session Text:

Vessel: EtO sterilizer
 Product: Pharma Medical
 Time Zone: UTC offset 01:00:00



Sensor Adjustment Report

ID	Sensor Value	Standard Value	Deviation	Calibration Timestamp
2238	N/A	N/A	N/A	N/A
2100	N/A	N/A	N/A	N/A
2122	N/A	N/A	N/A	N/A
2177	N/A	N/A	N/A	N/A
1920	N/A	N/A	N/A	N/A
2464	N/A	N/A	N/A	N/A
2764	N/A	N/A	N/A	N/A
2136	N/A	N/A	N/A	N/A
2051	N/A	N/A	N/A	N/A
2511	N/A	N/A	N/A	N/A
2060	N/A	N/A	N/A	N/A
2120	N/A	N/A	N/A	N/A
2180	N/A	N/A	N/A	N/A
2111	N/A	N/A	N/A	N/A
2061	N/A	N/A	N/A	N/A
2024	N/A	N/A	N/A	N/A
2755	N/A	N/A	N/A	N/A
2132	N/A	N/A	N/A	N/A
2119	N/A	N/A	N/A	N/A
2241	N/A	N/A	N/A	N/A
2299	N/A	N/A	N/A	N/A
2088	N/A	N/A	N/A	N/A
1974	N/A	N/A	N/A	N/A
2239	N/A	N/A	N/A	N/A
2219	N/A	N/A	N/A	N/A
2035	N/A	N/A	N/A	N/A
2084	N/A	N/A	N/A	N/A
2403	N/A	N/A	N/A	N/A
2149	N/A	N/A	N/A	N/A
2432	N/A	N/A	N/A	N/A
2807	N/A	N/A	N/A	N/A
2557	N/A	N/A	N/A	N/A
2535	N/A	N/A	N/A	N/A
1957	N/A	N/A	N/A	N/A
1980	N/A	N/A	N/A	N/A
2493	N/A	N/A	N/A	N/A
2466	N/A	N/A	N/A	N/A
2534	N/A	N/A	N/A	N/A
2440	N/A	N/A	N/A	N/A
2391	N/A	N/A	N/A	N/A
2393	N/A	N/A	N/A	N/A
2364	N/A	N/A	N/A	N/A
2475	N/A	N/A	N/A	N/A
2616	N/A	N/A	N/A	N/A
2489	N/A	N/A	N/A	N/A
2427	N/A	N/A	N/A	N/A
2052	N/A	N/A	N/A	N/A
2392	N/A	N/A	N/A	N/A
2424	N/A	N/A	N/A	N/A
2414	N/A	N/A	N/A	N/A
2508	N/A	N/A	N/A	N/A
2633	N/A	N/A	N/A	N/A

Operator: Validation Manager
Process: Validation
Session Start: 22-11-2013 09:22:12
Session Stop: 22-11-2013 09:22:23
Session Name: EtO Validation
Session Text:

Vessel: EtO sterilizer
Product: Pharma Medical
Time Zone: UTC offset 01:00:00



ID	Sensor Value	Standard Value	Deviation	Calibration Timestamp
2478	N/A	N/A	N/A	N/A
2830	N/A	N/A	N/A	N/A
2099	N/A	N/A	N/A	N/A

SAMPLE

Operator: Validation Manager
 Process: Validation
 Session Start: 22-11-2013 09:22:12
 Session Stop: 22-11-2013 09:22:23
 Session Name: EtO Validation
 Session Text:

Vessel: EtO sterilizer
 Product: Pharma Medical
 Time Zone: UTC offset 01:00:00



Statistics Report

Name: Statistics Calculations in EtO Process Time
 Description: Statistic calculations during EtO process with minimum temperature of +50°C

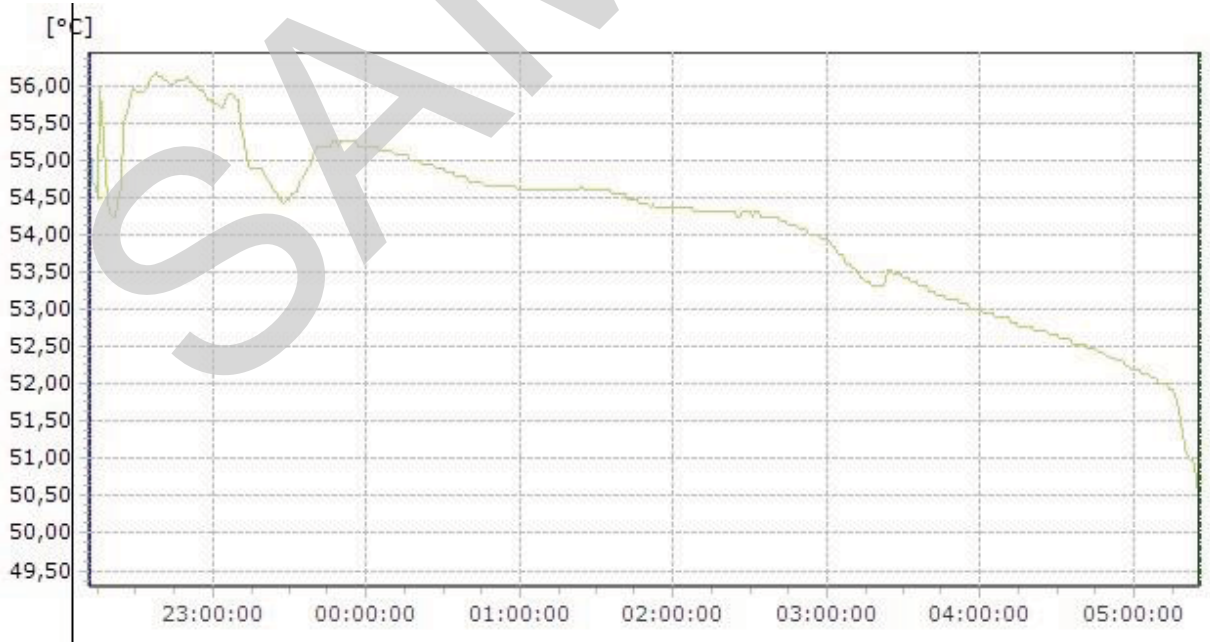
Input parameters

Data Series Type: Temperature
 Data series: LC 5, LC34, LC23, LC35, LC16, LC26, LC 9, LC47, LC11, LC15, LC27, LC22, LC55, LC 2, LC14, LC19, LC12, LC 3, LC18, LC 8, LC29, LC 4, LC13, LC25, LC 1, LC24, LC20, LC21, LC42, LC40, LC48, LC41, LC28, LC50, LC49, LC46, LC30, LC39, LC 6, LC37, LC43, LC53, LC45, LC36, LC51, LC10, LC38, LC33, LC32, LC44, LC52, LC17, LC 7, LC31, LC54
 Start Time: 12-03-1997 22:12:00
 Stop Time: 13-03-1997 05:26:00
 Output: Graphic Representation, Global Data analysis
 Functions: Min., Max., Average, Delta, Standard Deviation

Global Data analysis

Min.	49,54 °C	13-03-1997 05:26:00	LC11
Max.	62,93 °C	12-03-1997 22:32:00	LC37
Average	57,85 °C		
Delta	13,39 °C		
Standard Deviation	2,07 °C		

Graphic Representation Min

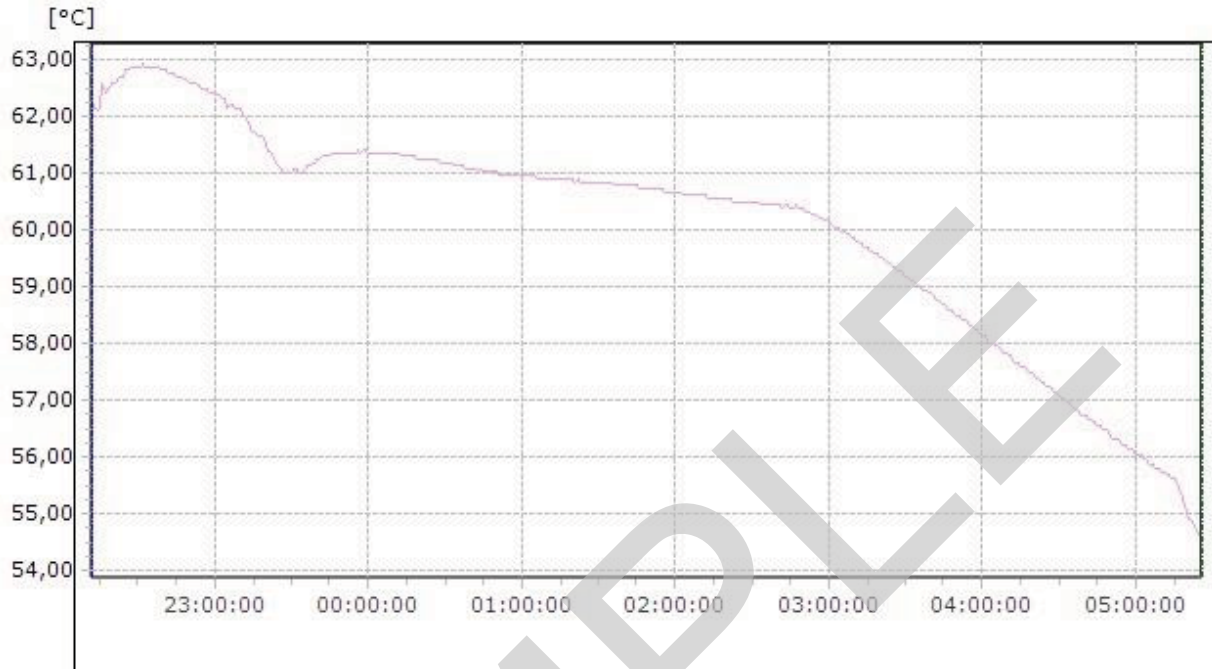


Operator: Validation Manager
Process: Validation
Session Start: 22-11-2013 09:22:12
Session Stop: 22-11-2013 09:22:23
Session Name: EtO Validation
Session Text:

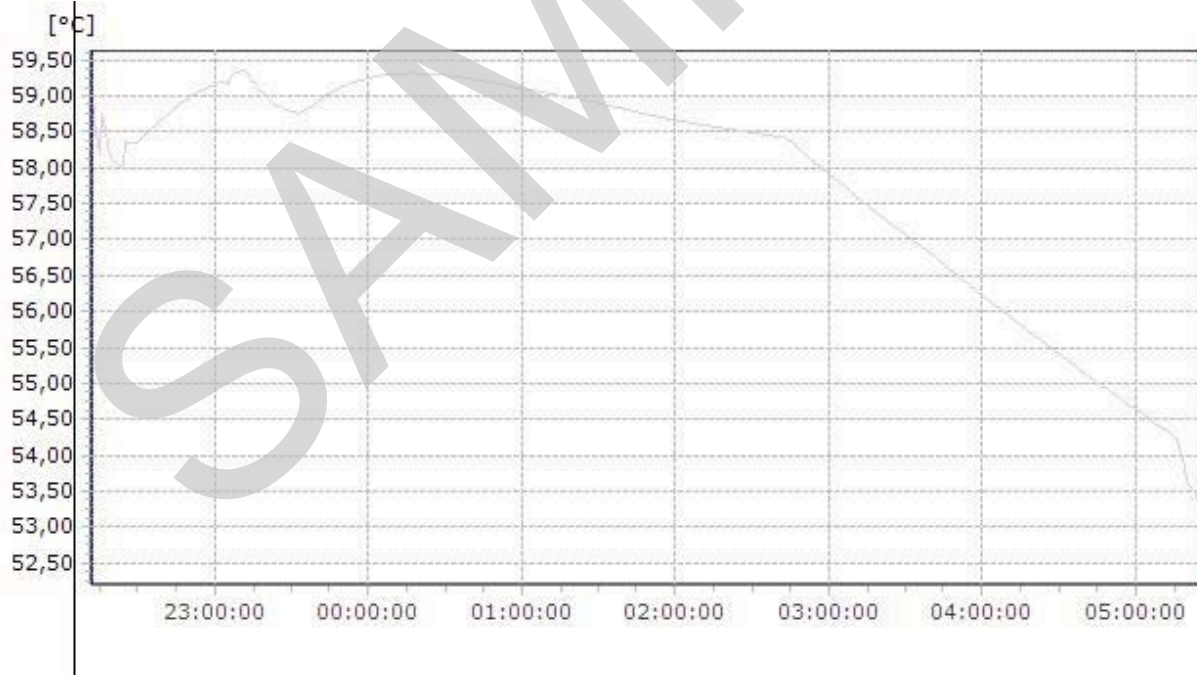
Vessel: EtO sterilizer
Product: Pharma Medical
Time Zone: UTC offset 01:00:00



Graphic Representation Max



Graphic Representation Average

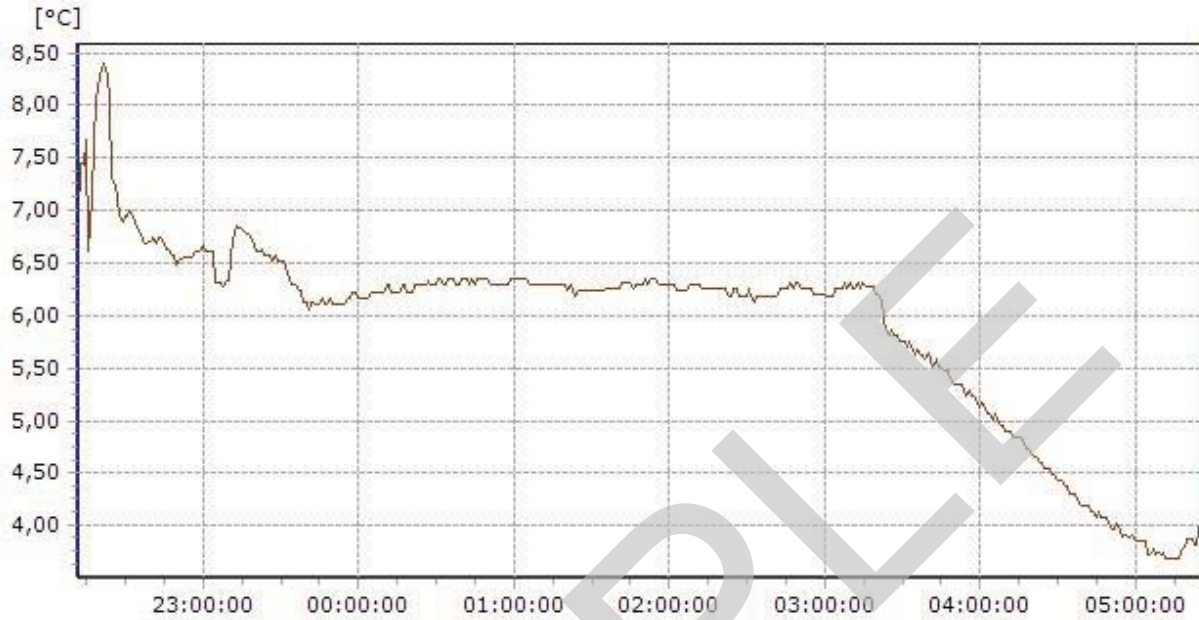


Operator: Validation Manager
 Process: Validation
 Session Start: 22-11-2013 09:22:12
 Session Stop: 22-11-2013 09:22:23
 Session Name: EtO Validation
 Session Text:

Vessel: EtO sterilizer
 Product: Pharma Medical
 Time Zone: UTC offset 01:00:00



Graphic Representation Delta



Graphic Representation Standard Deviation



Data Series analysis

Min average	54,34 °C	LC55
Max average	59,73 °C	LC31

Operator: Validation Manager
 Process: Validation
 Session Start: 22-11-2013 09:22:12
 Session Stop: 22-11-2013 09:22:23
 Session Name: EtO Validation
 Session Text:

Vessel: EtO sterilizer
 Product: Pharma Medical
 Time Zone: UTC offset 01:00:00



Limit Report

Name: EtO validation test
 Description: Test of temperature distribution in 55 points having minimum temperature of 50°C using TrackSense loggers

Input parameters

Criteria: Passed when 50,00 °C < Value
 Triggering : All, Temperature
 Data Series: LC 1, LC 2, LC 3, LC 4, LC 5, LC 6, LC 7, LC 8, LC 9, LC10, LC11, LC12, LC13, LC14, LC15, LC16, LC17, LC18, LC19, LC20, LC21, LC22, LC23, LC24, LC25, LC26, LC27, LC28, LC29, LC30, LC31, LC32, LC33, LC34, LC35, LC36, LC37, LC38, LC39, LC40, LC41, LC42, LC43, LC44, LC45, LC46, LC47, LC48, LC49, LC50, LC51, LC52, LC53, LC54, LC55

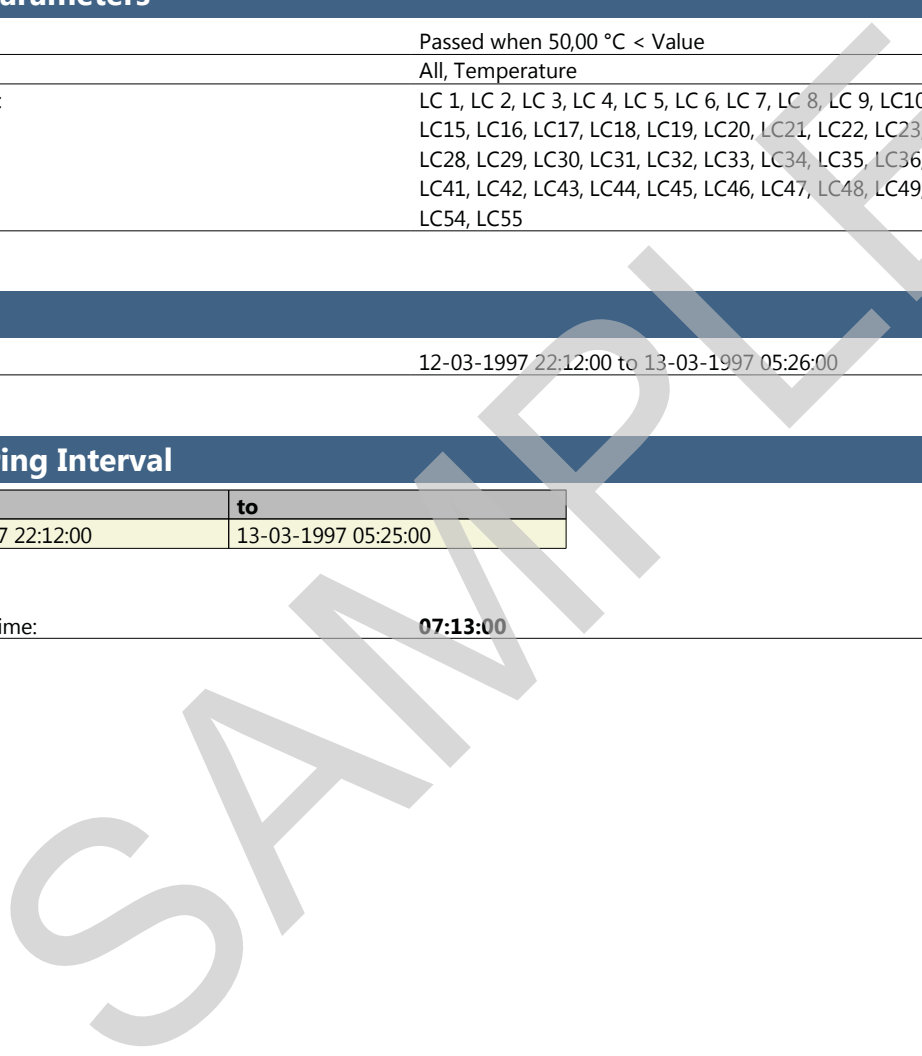
Range

Time: 12-03-1997 22:12:00 to 13-03-1997 05:26:00

Triggering Interval

from	to
12-03-1997 22:12:00	13-03-1997 05:25:00

Summary Time: **07:13:00**



Operator: Validation Manager Vessel: EtO sterilizer
 Process: Validation Product: Pharma Medical
 Session Start: 22-11-2013 09:22:12 Time Zone: UTC offset 01:00:00
 Session Stop: 22-11-2013 09:22:23
 Session Name: EtO Validation
 Session Text:



TrackSense Logger Settings Report

TrackSense Logger Settings

Logger S/N: 2777

Sensor ID:	2238	Factory Calibration Date:	N/A
Logger S/N:	2777	Start/Stop Trigger Source:	N/A
Adjust Start Time:	No	Start Process Value:	N/A
Start Time:	N/A	Stop Process Value:	N/A
Adjust Stop Time:	No	Stop Process Enable Value:	N/A
Stop Time:	N/A	Sampling Control Trigger Source:	N/A
Sample Rate 1:	00:00:00	Sampling Control Minimum Value:	N/A
Sample Rate 2:	N/A	Sampling Control Maximum Value:	N/A
Firmware Version:	0.0.0.0		

TrackSense Logger Settings

Logger S/N: 2182

Sensor ID:	2100	Factory Calibration Date:	N/A
Logger S/N:	2182	Start/Stop Trigger Source:	N/A
Adjust Start Time:	No	Start Process Value:	N/A
Start Time:	N/A	Stop Process Value:	N/A
Adjust Stop Time:	No	Stop Process Enable Value:	N/A
Stop Time:	N/A	Sampling Control Trigger Source:	N/A
Sample Rate 1:	00:00:00	Sampling Control Minimum Value:	N/A
Sample Rate 2:	N/A	Sampling Control Maximum Value:	N/A
Firmware Version:	0.0.0.0		

TrackSense Logger Settings

Logger S/N: 2756

Sensor ID:	2122	Factory Calibration Date:	N/A
Logger S/N:	2756	Start/Stop Trigger Source:	N/A
Adjust Start Time:	No	Start Process Value:	N/A
Start Time:	N/A	Stop Process Value:	N/A
Adjust Stop Time:	No	Stop Process Enable Value:	N/A
Stop Time:	N/A	Sampling Control Trigger Source:	N/A
Sample Rate 1:	00:00:00	Sampling Control Minimum Value:	N/A
Sample Rate 2:	N/A	Sampling Control Maximum Value:	N/A
Firmware Version:	0.0.0.0		

TrackSense Logger Settings

Logger S/N: 2219

Sensor ID:	2177	Factory Calibration Date:	N/A
Logger S/N:	2219	Start/Stop Trigger Source:	N/A
Adjust Start Time:	No	Start Process Value:	N/A
Start Time:	N/A	Stop Process Value:	N/A
Adjust Stop Time:	No	Stop Process Enable Value:	N/A
Stop Time:	N/A	Sampling Control Trigger Source:	N/A
Sample Rate 1:	00:00:00	Sampling Control Minimum Value:	N/A
Sample Rate 2:	N/A	Sampling Control Maximum Value:	N/A
Firmware Version:	0.0.0.0		

Operator: Validation Manager
 Process: Validation
 Session Start: 22-11-2013 09:22:12
 Session Stop: 22-11-2013 09:22:23
 Session Name: EtO Validation
 Session Text:

Vessel: EtO sterilizer
 Product: Pharma Medical
 Time Zone: UTC offset 01:00:00



TrackSense Logger Settings		Logger S/N: 2128	
Sensor ID:	1920	Factory Calibration Date:	N/A
Logger S/N:	2128	Start/Stop Trigger Source:	N/A
Adjust Start Time:	No	Start Process Value:	N/A
Start Time:	N/A	Stop Process Value:	N/A
Adjust Stop Time:	No	Stop Process Enable Value:	N/A
Stop Time:	N/A	Sampling Control Trigger Source:	N/A
Sample Rate 1:	00:00:00	Sampling Control Minimum Value:	N/A
Sample Rate 2:	N/A	Sampling Control Maximum Value:	N/A
Firmware Version:	0.0.0.0		

TrackSense Logger Settings		Logger S/N: 2752	
Sensor ID:	2464	Factory Calibration Date:	N/A
Logger S/N:	2752	Start/Stop Trigger Source:	N/A
Adjust Start Time:	No	Start Process Value:	N/A
Start Time:	N/A	Stop Process Value:	N/A
Adjust Stop Time:	No	Stop Process Enable Value:	N/A
Stop Time:	N/A	Sampling Control Trigger Source:	N/A
Sample Rate 1:	00:00:00	Sampling Control Minimum Value:	N/A
Sample Rate 2:	N/A	Sampling Control Maximum Value:	N/A
Firmware Version:	0.0.0.0		

TrackSense Logger Settings		Logger S/N: 2116	
Sensor ID:	2764	Factory Calibration Date:	N/A
Logger S/N:	2116	Start/Stop Trigger Source:	N/A
Adjust Start Time:	No	Start Process Value:	N/A
Start Time:	N/A	Stop Process Value:	N/A
Adjust Stop Time:	No	Stop Process Enable Value:	N/A
Stop Time:	N/A	Sampling Control Trigger Source:	N/A
Sample Rate 1:	00:00:00	Sampling Control Minimum Value:	N/A
Sample Rate 2:	N/A	Sampling Control Maximum Value:	N/A
Firmware Version:	0.0.0.0		

TrackSense Logger Settings		Logger S/N: 2181	
Sensor ID:	2136	Factory Calibration Date:	N/A
Logger S/N:	2181	Start/Stop Trigger Source:	N/A
Adjust Start Time:	No	Start Process Value:	N/A
Start Time:	N/A	Stop Process Value:	N/A
Adjust Stop Time:	No	Stop Process Enable Value:	N/A
Stop Time:	N/A	Sampling Control Trigger Source:	N/A
Sample Rate 1:	00:00:00	Sampling Control Minimum Value:	N/A
Sample Rate 2:	N/A	Sampling Control Maximum Value:	N/A
Firmware Version:	0.0.0.0		

TrackSense Logger Settings		Logger S/N: 2776	
Sensor ID:	2051	Factory Calibration Date:	N/A
Logger S/N:	2776	Start/Stop Trigger Source:	N/A
Adjust Start Time:	No	Start Process Value:	N/A

Operator: Validation Manager Vessel: EtO sterilizer
 Process: Validation Product: Pharma Medical
 Session Start: 22-11-2013 09:22:12 Time Zone: UTC offset 01:00:00
 Session Stop: 22-11-2013 09:22:23
 Session Name: EtO Validation
 Session Text:



Start Time:	N/A	Stop Process Value:	N/A
Adjust Stop Time:	No	Stop Process Enable Value:	N/A
Stop Time:	N/A	Sampling Control Trigger Source:	N/A
Sample Rate 1:	00:00:00	Sampling Control Minimum Value:	N/A
Sample Rate 2:	N/A	Sampling Control Maximum Value:	N/A
Firmware Version:	0.0.0.0		

TrackSense Logger Settings **Logger S/N: 2749**

Sensor ID:	2511	Factory Calibration Date:	N/A
Logger S/N:	2749	Start/Stop Trigger Source:	N/A
Adjust Start Time:	No	Start Process Value:	N/A
Start Time:	N/A	Stop Process Value:	N/A
Adjust Stop Time:	No	Stop Process Enable Value:	N/A
Stop Time:	N/A	Sampling Control Trigger Source:	N/A
Sample Rate 1:	00:00:00	Sampling Control Minimum Value:	N/A
Sample Rate 2:	N/A	Sampling Control Maximum Value:	N/A
Firmware Version:	0.0.0.0		

TrackSense Logger Settings **Logger S/N: 2281**

Sensor ID:	2060	Factory Calibration Date:	N/A
Logger S/N:	2281	Start/Stop Trigger Source:	N/A
Adjust Start Time:	No	Start Process Value:	N/A
Start Time:	N/A	Stop Process Value:	N/A
Adjust Stop Time:	No	Stop Process Enable Value:	N/A
Stop Time:	N/A	Sampling Control Trigger Source:	N/A
Sample Rate 1:	00:00:00	Sampling Control Minimum Value:	N/A
Sample Rate 2:	N/A	Sampling Control Maximum Value:	N/A
Firmware Version:	0.0.0.0		

TrackSense Logger Settings **Logger S/N: 2861**

Sensor ID:	2120	Factory Calibration Date:	N/A
Logger S/N:	2861	Start/Stop Trigger Source:	N/A
Adjust Start Time:	No	Start Process Value:	N/A
Start Time:	N/A	Stop Process Value:	N/A
Adjust Stop Time:	No	Stop Process Enable Value:	N/A
Stop Time:	N/A	Sampling Control Trigger Source:	N/A
Sample Rate 1:	00:00:00	Sampling Control Minimum Value:	N/A
Sample Rate 2:	N/A	Sampling Control Maximum Value:	N/A
Firmware Version:	0.0.0.0		

TrackSense Logger Settings **Logger S/N: 2631**

Sensor ID:	2180	Factory Calibration Date:	N/A
Logger S/N:	2631	Start/Stop Trigger Source:	N/A
Adjust Start Time:	No	Start Process Value:	N/A
Start Time:	N/A	Stop Process Value:	N/A
Adjust Stop Time:	No	Stop Process Enable Value:	N/A
Stop Time:	N/A	Sampling Control Trigger Source:	N/A
Sample Rate 1:	00:00:00	Sampling Control Minimum Value:	N/A
Sample Rate 2:	N/A	Sampling Control Maximum Value:	N/A

Operator: Validation Manager
 Process: Validation
 Session Start: 22-11-2013 09:22:12
 Session Stop: 22-11-2013 09:22:23
 Session Name: EtO Validation
 Session Text:

Vessel: EtO sterilizer
 Product: Pharma Medical
 Time Zone: UTC offset 01:00:00



Firmware Version:	0.0.0.0		
-------------------	---------	--	--

TrackSense Logger Settings **Logger S/N: 2598**

Sensor ID:	2111	Factory Calibration Date:	N/A
Logger S/N:	2598	Start/Stop Trigger Source:	N/A
Adjust Start Time:	No	Start Process Value:	N/A
Start Time:	N/A	Stop Process Value:	N/A
Adjust Stop Time:	No	Stop Process Enable Value:	N/A
Stop Time:	N/A	Sampling Control Trigger Source:	N/A
Sample Rate 1:	00:00:00	Sampling Control Minimum Value:	N/A
Sample Rate 2:	N/A	Sampling Control Maximum Value:	N/A
Firmware Version:	0.0.0.0		

TrackSense Logger Settings **Logger S/N: 2491**

Sensor ID:	2061	Factory Calibration Date:	N/A
Logger S/N:	2491	Start/Stop Trigger Source:	N/A
Adjust Start Time:	No	Start Process Value:	N/A
Start Time:	N/A	Stop Process Value:	N/A
Adjust Stop Time:	No	Stop Process Enable Value:	N/A
Stop Time:	N/A	Sampling Control Trigger Source:	N/A
Sample Rate 1:	00:00:00	Sampling Control Minimum Value:	N/A
Sample Rate 2:	N/A	Sampling Control Maximum Value:	N/A
Firmware Version:	0.0.0.0		

TrackSense Logger Settings **Logger S/N: 2576**

Sensor ID:	2024	Factory Calibration Date:	N/A
Logger S/N:	2576	Start/Stop Trigger Source:	N/A
Adjust Start Time:	No	Start Process Value:	N/A
Start Time:	N/A	Stop Process Value:	N/A
Adjust Stop Time:	No	Stop Process Enable Value:	N/A
Stop Time:	N/A	Sampling Control Trigger Source:	N/A
Sample Rate 1:	00:00:00	Sampling Control Minimum Value:	N/A
Sample Rate 2:	N/A	Sampling Control Maximum Value:	N/A
Firmware Version:	0.0.0.0		

TrackSense Logger Settings **Logger S/N: 2498**

Sensor ID:	2755	Factory Calibration Date:	N/A
Logger S/N:	2498	Start/Stop Trigger Source:	N/A
Adjust Start Time:	No	Start Process Value:	N/A
Start Time:	N/A	Stop Process Value:	N/A
Adjust Stop Time:	No	Stop Process Enable Value:	N/A
Stop Time:	N/A	Sampling Control Trigger Source:	N/A
Sample Rate 1:	00:00:00	Sampling Control Minimum Value:	N/A
Sample Rate 2:	N/A	Sampling Control Maximum Value:	N/A
Firmware Version:	0.0.0.0		

TrackSense Logger Settings **Logger S/N: 2441**

Operator: Validation Manager
 Process: Validation
 Session Start: 22-11-2013 09:22:12
 Session Stop: 22-11-2013 09:22:23
 Session Name: EtO Validation
 Session Text:

Vessel: EtO sterilizer
 Product: Pharma Medical
 Time Zone: UTC offset 01:00:00



Sensor ID:	2132	Factory Calibration Date:	N/A
Logger S/N:	2441	Start/Stop Trigger Source:	N/A
Adjust Start Time:	No	Start Process Value:	N/A
Start Time:	N/A	Stop Process Value:	N/A
Adjust Stop Time:	No	Stop Process Enable Value:	N/A
Stop Time:	N/A	Sampling Control Trigger Source:	N/A
Sample Rate 1:	00:00:00	Sampling Control Minimum Value:	N/A
Sample Rate 2:	N/A	Sampling Control Maximum Value:	N/A
Firmware Version:	0.0.0.0		

TrackSense Logger Settings Logger S/N: 2867

Sensor ID:	2119	Factory Calibration Date:	N/A
Logger S/N:	2867	Start/Stop Trigger Source:	N/A
Adjust Start Time:	No	Start Process Value:	N/A
Start Time:	N/A	Stop Process Value:	N/A
Adjust Stop Time:	No	Stop Process Enable Value:	N/A
Stop Time:	N/A	Sampling Control Trigger Source:	N/A
Sample Rate 1:	00:00:00	Sampling Control Minimum Value:	N/A
Sample Rate 2:	N/A	Sampling Control Maximum Value:	N/A
Firmware Version:	0.0.0.0		

TrackSense Logger Settings Logger S/N: 2321

Sensor ID:	2241	Factory Calibration Date:	N/A
Logger S/N:	2321	Start/Stop Trigger Source:	N/A
Adjust Start Time:	No	Start Process Value:	N/A
Start Time:	N/A	Stop Process Value:	N/A
Adjust Stop Time:	No	Stop Process Enable Value:	N/A
Stop Time:	N/A	Sampling Control Trigger Source:	N/A
Sample Rate 1:	00:00:00	Sampling Control Minimum Value:	N/A
Sample Rate 2:	N/A	Sampling Control Maximum Value:	N/A
Firmware Version:	0.0.0.0		

TrackSense Logger Settings Logger S/N: 2331

Sensor ID:	2299	Factory Calibration Date:	N/A
Logger S/N:	2331	Start/Stop Trigger Source:	N/A
Adjust Start Time:	No	Start Process Value:	N/A
Start Time:	N/A	Stop Process Value:	N/A
Adjust Stop Time:	No	Stop Process Enable Value:	N/A
Stop Time:	N/A	Sampling Control Trigger Source:	N/A
Sample Rate 1:	00:00:00	Sampling Control Minimum Value:	N/A
Sample Rate 2:	N/A	Sampling Control Maximum Value:	N/A
Firmware Version:	0.0.0.0		

TrackSense Logger Settings Logger S/N: 2731

Sensor ID:	2088	Factory Calibration Date:	N/A
Logger S/N:	2731	Start/Stop Trigger Source:	N/A
Adjust Start Time:	No	Start Process Value:	N/A
Start Time:	N/A	Stop Process Value:	N/A
Adjust Stop Time:	No	Stop Process Enable Value:	N/A

Operator: Validation Manager
 Process: Validation
 Session Start: 22-11-2013 09:22:12
 Session Stop: 22-11-2013 09:22:23
 Session Name: EtO Validation
 Session Text:

Vessel: EtO sterilizer
 Product: Pharma Medical
 Time Zone: UTC offset 01:00:00



Stop Time:	N/A	Sampling Control Trigger Source:	N/A
Sample Rate 1:	00:00:00	Sampling Control Minimum Value:	N/A
Sample Rate 2:	N/A	Sampling Control Maximum Value:	N/A
Firmware Version:	0.0.0.0		

TrackSense Logger Settings **Logger S/N: 2654**

Sensor ID:	1974	Factory Calibration Date:	N/A
Logger S/N:	2654	Start/Stop Trigger Source:	N/A
Adjust Start Time:	No	Start Process Value:	N/A
Start Time:	N/A	Stop Process Value:	N/A
Adjust Stop Time:	No	Stop Process Enable Value:	N/A
Stop Time:	N/A	Sampling Control Trigger Source:	N/A
Sample Rate 1:	00:00:00	Sampling Control Minimum Value:	N/A
Sample Rate 2:	N/A	Sampling Control Maximum Value:	N/A
Firmware Version:	0.0.0.0		

TrackSense Logger Settings **Logger S/N: 2448**

Sensor ID:	2239	Factory Calibration Date:	N/A
Logger S/N:	2448	Start/Stop Trigger Source:	N/A
Adjust Start Time:	No	Start Process Value:	N/A
Start Time:	N/A	Stop Process Value:	N/A
Adjust Stop Time:	No	Stop Process Enable Value:	N/A
Stop Time:	N/A	Sampling Control Trigger Source:	N/A
Sample Rate 1:	00:00:00	Sampling Control Minimum Value:	N/A
Sample Rate 2:	N/A	Sampling Control Maximum Value:	N/A
Firmware Version:	0.0.0.0		

TrackSense Logger Settings **Logger S/N: 2859**

Sensor ID:	2219	Factory Calibration Date:	N/A
Logger S/N:	2859	Start/Stop Trigger Source:	N/A
Adjust Start Time:	No	Start Process Value:	N/A
Start Time:	N/A	Stop Process Value:	N/A
Adjust Stop Time:	No	Stop Process Enable Value:	N/A
Stop Time:	N/A	Sampling Control Trigger Source:	N/A
Sample Rate 1:	00:00:00	Sampling Control Minimum Value:	N/A
Sample Rate 2:	N/A	Sampling Control Maximum Value:	N/A
Firmware Version:	0.0.0.0		

TrackSense Logger Settings **Logger S/N: 2431**

Sensor ID:	2035	Factory Calibration Date:	N/A
Logger S/N:	2431	Start/Stop Trigger Source:	N/A
Adjust Start Time:	No	Start Process Value:	N/A
Start Time:	N/A	Stop Process Value:	N/A
Adjust Stop Time:	No	Stop Process Enable Value:	N/A
Stop Time:	N/A	Sampling Control Trigger Source:	N/A
Sample Rate 1:	00:00:00	Sampling Control Minimum Value:	N/A
Sample Rate 2:	N/A	Sampling Control Maximum Value:	N/A
Firmware Version:	0.0.0.0		

Operator: Validation Manager Vessel: EtO sterilizer
 Process: Validation Product: Pharma Medical
 Session Start: 22-11-2013 09:22:12 Time Zone: UTC offset 01:00:00
 Session Stop: 22-11-2013 09:22:23
 Session Name: EtO Validation
 Session Text:



TrackSense Logger Settings **Logger S/N: 2360**

Sensor ID:	2084	Factory Calibration Date:	N/A
Logger S/N:	2360	Start/Stop Trigger Source:	N/A
Adjust Start Time:	No	Start Process Value:	N/A
Start Time:	N/A	Stop Process Value:	N/A
Adjust Stop Time:	No	Stop Process Enable Value:	N/A
Stop Time:	N/A	Sampling Control Trigger Source:	N/A
Sample Rate 1:	00:00:00	Sampling Control Minimum Value:	N/A
Sample Rate 2:	N/A	Sampling Control Maximum Value:	N/A
Firmware Version:	0.0.0.0		

TrackSense Logger Settings **Logger S/N: 2467**

Sensor ID:	2403	Factory Calibration Date:	N/A
Logger S/N:	2467	Start/Stop Trigger Source:	N/A
Adjust Start Time:	No	Start Process Value:	N/A
Start Time:	N/A	Stop Process Value:	N/A
Adjust Stop Time:	No	Stop Process Enable Value:	N/A
Stop Time:	N/A	Sampling Control Trigger Source:	N/A
Sample Rate 1:	00:00:00	Sampling Control Minimum Value:	N/A
Sample Rate 2:	N/A	Sampling Control Maximum Value:	N/A
Firmware Version:	0.0.0.0		

TrackSense Logger Settings **Logger S/N: 2865**

Sensor ID:	2149	Factory Calibration Date:	N/A
Logger S/N:	2865	Start/Stop Trigger Source:	N/A
Adjust Start Time:	No	Start Process Value:	N/A
Start Time:	N/A	Stop Process Value:	N/A
Adjust Stop Time:	No	Stop Process Enable Value:	N/A
Stop Time:	N/A	Sampling Control Trigger Source:	N/A
Sample Rate 1:	00:00:00	Sampling Control Minimum Value:	N/A
Sample Rate 2:	N/A	Sampling Control Maximum Value:	N/A
Firmware Version:	0.0.0.0		

TrackSense Logger Settings **Logger S/N: 2410**

Sensor ID:	2432	Factory Calibration Date:	N/A
Logger S/N:	2410	Start/Stop Trigger Source:	N/A
Adjust Start Time:	No	Start Process Value:	N/A
Start Time:	N/A	Stop Process Value:	N/A
Adjust Stop Time:	No	Stop Process Enable Value:	N/A
Stop Time:	N/A	Sampling Control Trigger Source:	N/A
Sample Rate 1:	00:00:00	Sampling Control Minimum Value:	N/A
Sample Rate 2:	N/A	Sampling Control Maximum Value:	N/A
Firmware Version:	0.0.0.0		

TrackSense Logger Settings **Logger S/N: 2322**

Sensor ID:	2807	Factory Calibration Date:	N/A
------------	------	---------------------------	-----

Operator: Validation Manager
 Process: Validation
 Session Start: 22-11-2013 09:22:12
 Session Stop: 22-11-2013 09:22:23
 Session Name: EtO Validation
 Session Text:

Vessel: EtO sterilizer
 Product: Pharma Medical
 Time Zone: UTC offset 01:00:00



Logger S/N:	2322	Start/Stop Trigger Source:	N/A
Adjust Start Time:	No	Start Process Value:	N/A
Start Time:	N/A	Stop Process Value:	N/A
Adjust Stop Time:	No	Stop Process Enable Value:	N/A
Stop Time:	N/A	Sampling Control Trigger Source:	N/A
Sample Rate 1:	00:00:00	Sampling Control Minimum Value:	N/A
Sample Rate 2:	N/A	Sampling Control Maximum Value:	N/A
Firmware Version:	0.0.0.0		

TrackSense Logger Settings

Logger S/N: 2522

Sensor ID:	2557	Factory Calibration Date:	N/A
Logger S/N:	2522	Start/Stop Trigger Source:	N/A
Adjust Start Time:	No	Start Process Value:	N/A
Start Time:	N/A	Stop Process Value:	N/A
Adjust Stop Time:	No	Stop Process Enable Value:	N/A
Stop Time:	N/A	Sampling Control Trigger Source:	N/A
Sample Rate 1:	00:00:00	Sampling Control Minimum Value:	N/A
Sample Rate 2:	N/A	Sampling Control Maximum Value:	N/A
Firmware Version:	0.0.0.0		

TrackSense Logger Settings

Logger S/N: 2619

Sensor ID:	2535	Factory Calibration Date:	N/A
Logger S/N:	2619	Start/Stop Trigger Source:	N/A
Adjust Start Time:	No	Start Process Value:	N/A
Start Time:	N/A	Stop Process Value:	N/A
Adjust Stop Time:	No	Stop Process Enable Value:	N/A
Stop Time:	N/A	Sampling Control Trigger Source:	N/A
Sample Rate 1:	00:00:00	Sampling Control Minimum Value:	N/A
Sample Rate 2:	N/A	Sampling Control Maximum Value:	N/A
Firmware Version:	0.0.0.0		

TrackSense Logger Settings

Logger S/N: 2341

Sensor ID:	1957	Factory Calibration Date:	N/A
Logger S/N:	2341	Start/Stop Trigger Source:	N/A
Adjust Start Time:	No	Start Process Value:	N/A
Start Time:	N/A	Stop Process Value:	N/A
Adjust Stop Time:	No	Stop Process Enable Value:	N/A
Stop Time:	N/A	Sampling Control Trigger Source:	N/A
Sample Rate 1:	00:00:00	Sampling Control Minimum Value:	N/A
Sample Rate 2:	N/A	Sampling Control Maximum Value:	N/A
Firmware Version:	0.0.0.0		

TrackSense Logger Settings

Logger S/N: 2490

Sensor ID:	1980	Factory Calibration Date:	N/A
Logger S/N:	2490	Start/Stop Trigger Source:	N/A
Adjust Start Time:	No	Start Process Value:	N/A
Start Time:	N/A	Stop Process Value:	N/A
Adjust Stop Time:	No	Stop Process Enable Value:	N/A
Stop Time:	N/A	Sampling Control Trigger Source:	N/A

Operator: Validation Manager Vessel: EtO sterilizer
 Process: Validation Product: Pharma Medical
 Session Start: 22-11-2013 09:22:12 Time Zone: UTC offset 01:00:00
 Session Stop: 22-11-2013 09:22:23
 Session Name: EtO Validation
 Session Text:



Sample Rate 1:	00:00:00	Sampling Control Minimum Value:	N/A
Sample Rate 2:	N/A	Sampling Control Maximum Value:	N/A
Firmware Version:	0.0.0.0		

TrackSense Logger Settings **Logger S/N: 2669**

Sensor ID:	2493	Factory Calibration Date:	N/A
Logger S/N:	2669	Start/Stop Trigger Source:	N/A
Adjust Start Time:	No	Start Process Value:	N/A
Start Time:	N/A	Stop Process Value:	N/A
Adjust Stop Time:	No	Stop Process Enable Value:	N/A
Stop Time:	N/A	Sampling Control Trigger Source:	N/A
Sample Rate 1:	00:00:00	Sampling Control Minimum Value:	N/A
Sample Rate 2:	N/A	Sampling Control Maximum Value:	N/A
Firmware Version:	0.0.0.0		

TrackSense Logger Settings **Logger S/N: 2452**

Sensor ID:	2466	Factory Calibration Date:	N/A
Logger S/N:	2452	Start/Stop Trigger Source:	N/A
Adjust Start Time:	No	Start Process Value:	N/A
Start Time:	N/A	Stop Process Value:	N/A
Adjust Stop Time:	No	Stop Process Enable Value:	N/A
Stop Time:	N/A	Sampling Control Trigger Source:	N/A
Sample Rate 1:	00:00:00	Sampling Control Minimum Value:	N/A
Sample Rate 2:	N/A	Sampling Control Maximum Value:	N/A
Firmware Version:	0.0.0.0		

TrackSense Logger Settings **Logger S/N: 2675**

Sensor ID:	2534	Factory Calibration Date:	N/A
Logger S/N:	2675	Start/Stop Trigger Source:	N/A
Adjust Start Time:	No	Start Process Value:	N/A
Start Time:	N/A	Stop Process Value:	N/A
Adjust Stop Time:	No	Stop Process Enable Value:	N/A
Stop Time:	N/A	Sampling Control Trigger Source:	N/A
Sample Rate 1:	00:00:00	Sampling Control Minimum Value:	N/A
Sample Rate 2:	N/A	Sampling Control Maximum Value:	N/A
Firmware Version:	0.0.0.0		

TrackSense Logger Settings **Logger S/N: 2724**

Sensor ID:	2440	Factory Calibration Date:	N/A
Logger S/N:	2724	Start/Stop Trigger Source:	N/A
Adjust Start Time:	No	Start Process Value:	N/A
Start Time:	N/A	Stop Process Value:	N/A
Adjust Stop Time:	No	Stop Process Enable Value:	N/A
Stop Time:	N/A	Sampling Control Trigger Source:	N/A
Sample Rate 1:	00:00:00	Sampling Control Minimum Value:	N/A
Sample Rate 2:	N/A	Sampling Control Maximum Value:	N/A
Firmware Version:	0.0.0.0		

Operator: Validation Manager
 Process: Validation
 Session Start: 22-11-2013 09:22:12
 Session Stop: 22-11-2013 09:22:23
 Session Name: EtO Validation
 Session Text:

Vessel: EtO sterilizer
 Product: Pharma Medical
 Time Zone: UTC offset 01:00:00



TrackSense Logger Settings		Logger S/N: 2648	
Sensor ID:	2391	Factory Calibration Date:	N/A
Logger S/N:	2648	Start/Stop Trigger Source:	N/A
Adjust Start Time:	No	Start Process Value:	N/A
Start Time:	N/A	Stop Process Value:	N/A
Adjust Stop Time:	No	Stop Process Enable Value:	N/A
Stop Time:	N/A	Sampling Control Trigger Source:	N/A
Sample Rate 1:	00:00:00	Sampling Control Minimum Value:	N/A
Sample Rate 2:	N/A	Sampling Control Maximum Value:	N/A
Firmware Version:	0.0.0.0		

TrackSense Logger Settings		Logger S/N: 2847	
Sensor ID:	2393	Factory Calibration Date:	N/A
Logger S/N:	2847	Start/Stop Trigger Source:	N/A
Adjust Start Time:	No	Start Process Value:	N/A
Start Time:	N/A	Stop Process Value:	N/A
Adjust Stop Time:	No	Stop Process Enable Value:	N/A
Stop Time:	N/A	Sampling Control Trigger Source:	N/A
Sample Rate 1:	00:00:00	Sampling Control Minimum Value:	N/A
Sample Rate 2:	N/A	Sampling Control Maximum Value:	N/A
Firmware Version:	0.0.0.0		

TrackSense Logger Settings		Logger S/N: 2320	
Sensor ID:	2364	Factory Calibration Date:	N/A
Logger S/N:	2320	Start/Stop Trigger Source:	N/A
Adjust Start Time:	No	Start Process Value:	N/A
Start Time:	N/A	Stop Process Value:	N/A
Adjust Stop Time:	No	Stop Process Enable Value:	N/A
Stop Time:	N/A	Sampling Control Trigger Source:	N/A
Sample Rate 1:	00:00:00	Sampling Control Minimum Value:	N/A
Sample Rate 2:	N/A	Sampling Control Maximum Value:	N/A
Firmware Version:	0.0.0.0		

TrackSense Logger Settings		Logger S/N: 2312	
Sensor ID:	2475	Factory Calibration Date:	N/A
Logger S/N:	2312	Start/Stop Trigger Source:	N/A
Adjust Start Time:	No	Start Process Value:	N/A
Start Time:	N/A	Stop Process Value:	N/A
Adjust Stop Time:	No	Stop Process Enable Value:	N/A
Stop Time:	N/A	Sampling Control Trigger Source:	N/A
Sample Rate 1:	00:00:00	Sampling Control Minimum Value:	N/A
Sample Rate 2:	N/A	Sampling Control Maximum Value:	N/A
Firmware Version:	0.0.0.0		

TrackSense Logger Settings		Logger S/N: 2850	
Sensor ID:	2616	Factory Calibration Date:	N/A
Logger S/N:	2850	Start/Stop Trigger Source:	N/A
Adjust Start Time:	No	Start Process Value:	N/A

Operator: Validation Manager
 Process: Validation
 Session Start: 22-11-2013 09:22:12
 Session Stop: 22-11-2013 09:22:23
 Session Name: EtO Validation
 Session Text:

Vessel: EtO sterilizer
 Product: Pharma Medical
 Time Zone: UTC offset 01:00:00



Start Time:	N/A	Stop Process Value:	N/A
Adjust Stop Time:	No	Stop Process Enable Value:	N/A
Stop Time:	N/A	Sampling Control Trigger Source:	N/A
Sample Rate 1:	00:00:00	Sampling Control Minimum Value:	N/A
Sample Rate 2:	N/A	Sampling Control Maximum Value:	N/A
Firmware Version:	0.0.0.0		

TrackSense Logger Settings **Logger S/N: 2411**

Sensor ID:	2489	Factory Calibration Date:	N/A
Logger S/N:	2411	Start/Stop Trigger Source:	N/A
Adjust Start Time:	No	Start Process Value:	N/A
Start Time:	N/A	Stop Process Value:	N/A
Adjust Stop Time:	No	Stop Process Enable Value:	N/A
Stop Time:	N/A	Sampling Control Trigger Source:	N/A
Sample Rate 1:	00:00:00	Sampling Control Minimum Value:	N/A
Sample Rate 2:	N/A	Sampling Control Maximum Value:	N/A
Firmware Version:	0.0.0.0		

TrackSense Logger Settings **Logger S/N: 2302**

Sensor ID:	2427	Factory Calibration Date:	N/A
Logger S/N:	2302	Start/Stop Trigger Source:	N/A
Adjust Start Time:	No	Start Process Value:	N/A
Start Time:	N/A	Stop Process Value:	N/A
Adjust Stop Time:	No	Stop Process Enable Value:	N/A
Stop Time:	N/A	Sampling Control Trigger Source:	N/A
Sample Rate 1:	00:00:00	Sampling Control Minimum Value:	N/A
Sample Rate 2:	N/A	Sampling Control Maximum Value:	N/A
Firmware Version:	0.0.0.0		

TrackSense Logger Settings **Logger S/N: 2456**

Sensor ID:	2052	Factory Calibration Date:	N/A
Logger S/N:	2456	Start/Stop Trigger Source:	N/A
Adjust Start Time:	No	Start Process Value:	N/A
Start Time:	N/A	Stop Process Value:	N/A
Adjust Stop Time:	No	Stop Process Enable Value:	N/A
Stop Time:	N/A	Sampling Control Trigger Source:	N/A
Sample Rate 1:	00:00:00	Sampling Control Minimum Value:	N/A
Sample Rate 2:	N/A	Sampling Control Maximum Value:	N/A
Firmware Version:	0.0.0.0		

TrackSense Logger Settings **Logger S/N: 2329**

Sensor ID:	2392	Factory Calibration Date:	N/A
Logger S/N:	2329	Start/Stop Trigger Source:	N/A
Adjust Start Time:	No	Start Process Value:	N/A
Start Time:	N/A	Stop Process Value:	N/A
Adjust Stop Time:	No	Stop Process Enable Value:	N/A
Stop Time:	N/A	Sampling Control Trigger Source:	N/A
Sample Rate 1:	00:00:00	Sampling Control Minimum Value:	N/A
Sample Rate 2:	N/A	Sampling Control Maximum Value:	N/A

Operator: Validation Manager
 Process: Validation
 Session Start: 22-11-2013 09:22:12
 Session Stop: 22-11-2013 09:22:23
 Session Name: EtO Validation
 Session Text:

Vessel: EtO sterilizer
 Product: Pharma Medical
 Time Zone: UTC offset 01:00:00



Firmware Version:	0.0.0.0		
-------------------	---------	--	--

TrackSense Logger Settings **Logger S/N: 2759**

Sensor ID:	2424	Factory Calibration Date:	N/A
Logger S/N:	2759	Start/Stop Trigger Source:	N/A
Adjust Start Time:	No	Start Process Value:	N/A
Start Time:	N/A	Stop Process Value:	N/A
Adjust Stop Time:	No	Stop Process Enable Value:	N/A
Stop Time:	N/A	Sampling Control Trigger Source:	N/A
Sample Rate 1:	00:00:00	Sampling Control Minimum Value:	N/A
Sample Rate 2:	N/A	Sampling Control Maximum Value:	N/A
Firmware Version:	0.0.0.0		

TrackSense Logger Settings **Logger S/N: 2833**

Sensor ID:	2414	Factory Calibration Date:	N/A
Logger S/N:	2833	Start/Stop Trigger Source:	N/A
Adjust Start Time:	No	Start Process Value:	N/A
Start Time:	N/A	Stop Process Value:	N/A
Adjust Stop Time:	No	Stop Process Enable Value:	N/A
Stop Time:	N/A	Sampling Control Trigger Source:	N/A
Sample Rate 1:	00:00:00	Sampling Control Minimum Value:	N/A
Sample Rate 2:	N/A	Sampling Control Maximum Value:	N/A
Firmware Version:	0.0.0.0		

TrackSense Logger Settings **Logger S/N: 2721**

Sensor ID:	2508	Factory Calibration Date:	N/A
Logger S/N:	2721	Start/Stop Trigger Source:	N/A
Adjust Start Time:	No	Start Process Value:	N/A
Start Time:	N/A	Stop Process Value:	N/A
Adjust Stop Time:	No	Stop Process Enable Value:	N/A
Stop Time:	N/A	Sampling Control Trigger Source:	N/A
Sample Rate 1:	00:00:00	Sampling Control Minimum Value:	N/A
Sample Rate 2:	N/A	Sampling Control Maximum Value:	N/A
Firmware Version:	0.0.0.0		

TrackSense Logger Settings **Logger S/N: 2326**

Sensor ID:	2633	Factory Calibration Date:	N/A
Logger S/N:	2326	Start/Stop Trigger Source:	N/A
Adjust Start Time:	No	Start Process Value:	N/A
Start Time:	N/A	Stop Process Value:	N/A
Adjust Stop Time:	No	Stop Process Enable Value:	N/A
Stop Time:	N/A	Sampling Control Trigger Source:	N/A
Sample Rate 1:	00:00:00	Sampling Control Minimum Value:	N/A
Sample Rate 2:	N/A	Sampling Control Maximum Value:	N/A
Firmware Version:	0.0.0.0		

TrackSense Logger Settings **Logger S/N: 2350**

Operator: Validation Manager
 Process: Validation
 Session Start: 22-11-2013 09:22:12
 Session Stop: 22-11-2013 09:22:23
 Session Name: EtO Validation
 Session Text:

Vessel: EtO sterilizer
 Product: Pharma Medical
 Time Zone: UTC offset 01:00:00



Sensor ID:	2478	Factory Calibration Date:	N/A
Logger S/N:	2350	Start/Stop Trigger Source:	N/A
Adjust Start Time:	No	Start Process Value:	N/A
Start Time:	N/A	Stop Process Value:	N/A
Adjust Stop Time:	No	Stop Process Enable Value:	N/A
Stop Time:	N/A	Sampling Control Trigger Source:	N/A
Sample Rate 1:	00:00:00	Sampling Control Minimum Value:	N/A
Sample Rate 2:	N/A	Sampling Control Maximum Value:	N/A
Firmware Version:	0.0.0.0		

TrackSense Logger Settings **Logger S/N: 2557**

Sensor ID:	2830	Factory Calibration Date:	N/A
Logger S/N:	2557	Start/Stop Trigger Source:	N/A
Adjust Start Time:	No	Start Process Value:	N/A
Start Time:	N/A	Stop Process Value:	N/A
Adjust Stop Time:	No	Stop Process Enable Value:	N/A
Stop Time:	N/A	Sampling Control Trigger Source:	N/A
Sample Rate 1:	00:00:00	Sampling Control Minimum Value:	N/A
Sample Rate 2:	N/A	Sampling Control Maximum Value:	N/A
Firmware Version:	0.0.0.0		

TrackSense Logger Settings **Logger S/N: 2353**

Sensor ID:	2099	Factory Calibration Date:	N/A
Logger S/N:	2353	Start/Stop Trigger Source:	N/A
Adjust Start Time:	No	Start Process Value:	N/A
Start Time:	N/A	Stop Process Value:	N/A
Adjust Stop Time:	No	Stop Process Enable Value:	N/A
Stop Time:	N/A	Sampling Control Trigger Source:	N/A
Sample Rate 1:	00:00:00	Sampling Control Minimum Value:	N/A
Sample Rate 2:	N/A	Sampling Control Maximum Value:	N/A
Firmware Version:	0.0.0.0		